

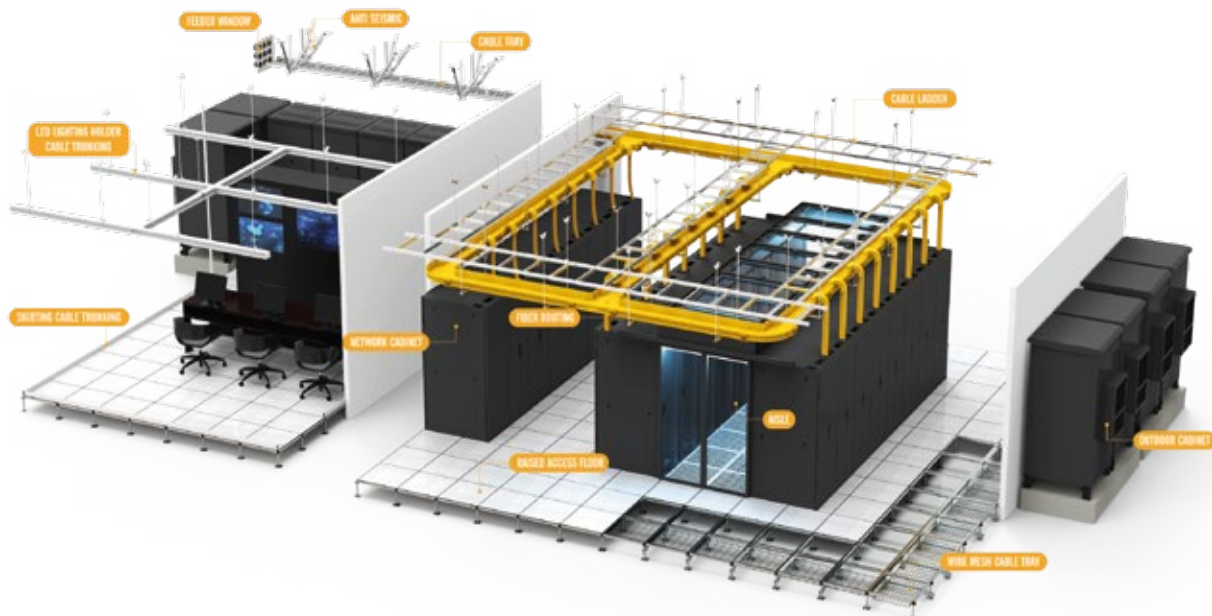


AISLE CONTAINMENT

Content

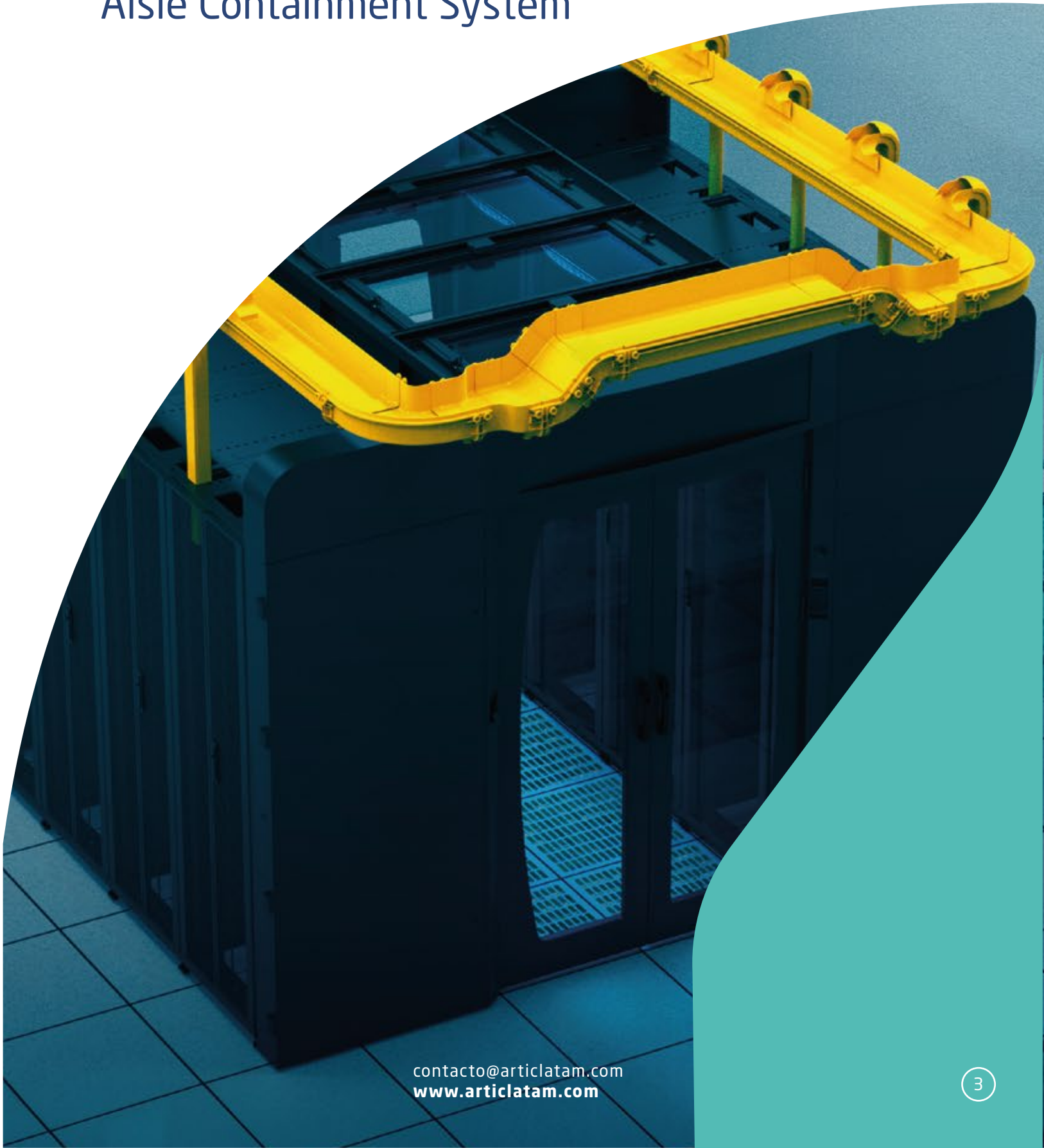
AISLE CONTAINMENT

Cold & Hot Aisle Containment System _____ 01



COLD & HOT

Aisle Containment System



COLD & HOT Aisle Containment System

60%

AIRFLOW
PERFORMANCE

60%

HEAT DISSIPATION
EFFICIENCY

40%

ELECTRICITY ENERGY
CONSUMPTION

The aisle containment system is a modular rowbased thermal containment solution, which separates cold and hot data center air streams to and from equipment. It manages airflow at the source, increases the cooling efficiency and significantly lowers down operating costs. Row level thermal containment improves cooling efficiency and predictability to address zones and complete data center deployments.

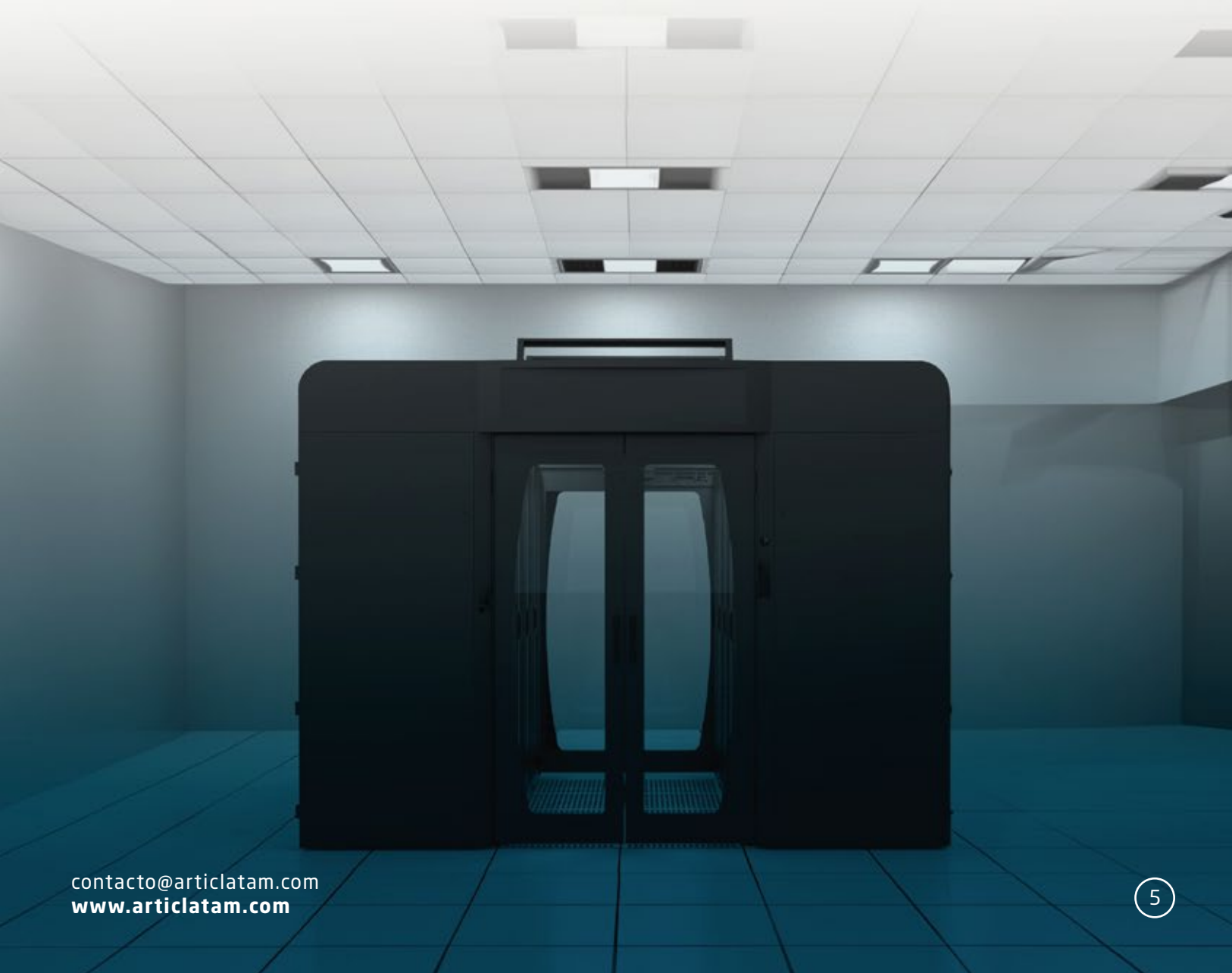
Most parts of the aisle containment components are designed by modular, which allows quick deployment on site and address changing needs or future expansion with pay-as-you grow architecture. Provide the right combination of safety and security, dual mechanical doors or sliding doors are available.

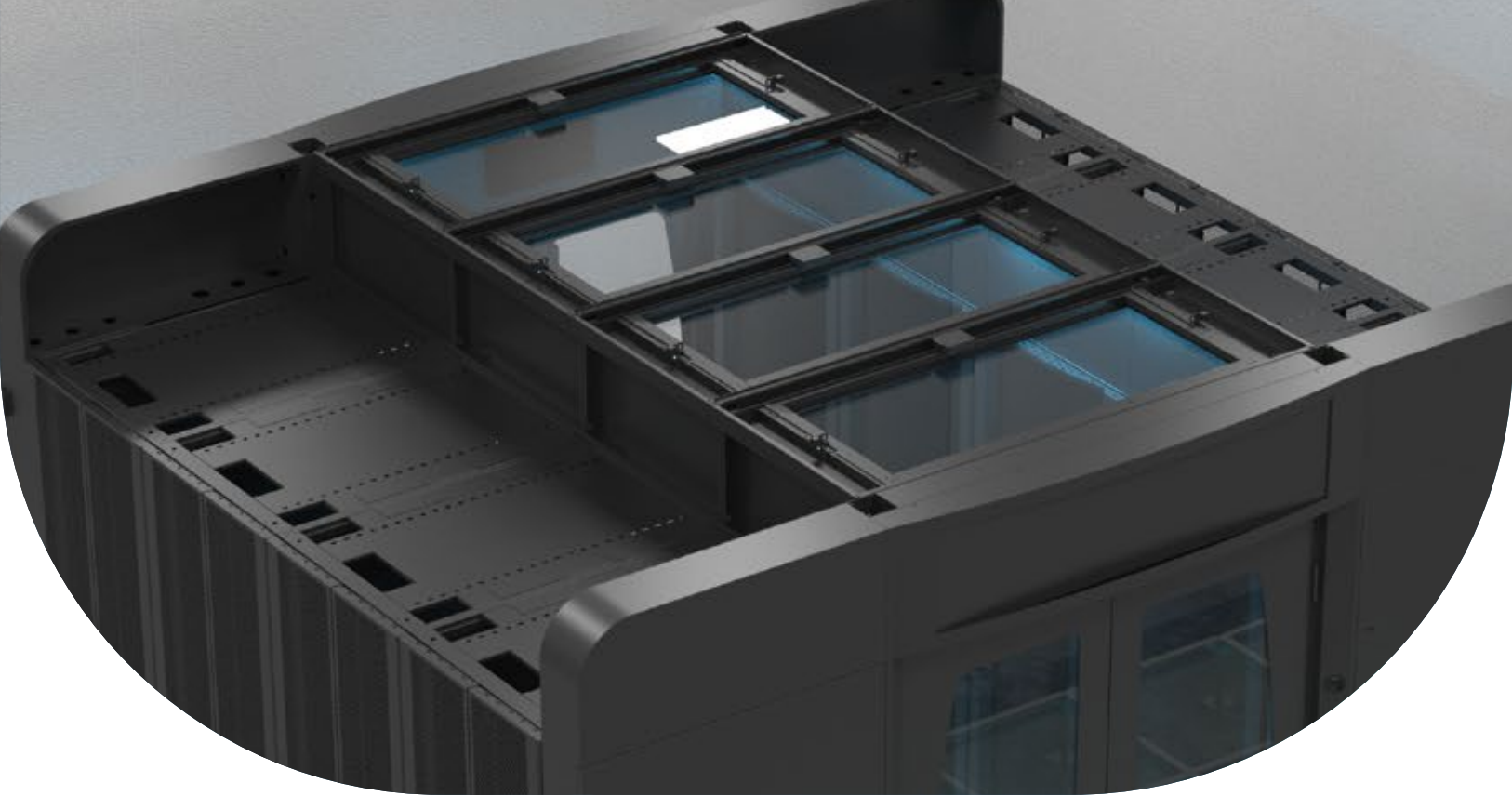
Aisle containment in the data center requires that cabinets are aligned in a hot aisle/cold aisle layout. Containment panels or strips create a partition to isolate either the server supply air (cold aisle containment) or the exhaust air (hot aisle containment). Preventing the supply and exhaust air from mixing significantly increases the capacity and cooling efficiency of the cooling infrastructure. Each site will be different due to the site conditions, cooling infrastructure, rack density and other factors. If properly installed you can expect 20-50% reduction in cooling costs. Efficiency is maximized if the cooling systems with variable speed fans and there is a good return air path.



Appearance and Structure

1. Containment Top Panel Has Even Roof Structure, 350mm Higher Than Cabinet Top, Top Panel Total Width Is 1305mm, Modular Frame Design, Easy To Installation.
2. The Net Height Of Aisle Container Is Above 2 Meters When The Top Panel Dropped Away, So The Daily Maintenance Will Not Be Affected.
3. Thanks To The Modular Designed Cold Aisle Containment Units, Every Unit Can Be Installed Independently And Easily Connected With The Units In Next.
4. Doors Should Be Installed At The Front And Rear To Prevents The Hot Airflow Enter Into The Equipment
5. Pre-Installed Terminal Block Is Connected With Fire Suppression Systems, The Active Containment Roof panel Will Open When There Is A Fire Alarm Signal





COMPONENTS OF Containment Roof Panel

Under Normal Operation Time, The Roof panels Are Stuck By Electromagnet In A Horizontal Position, In Case There Is A Fire Alarm, Roof panel's Electro-Magnet Will Be Cut Off, Panel Will Open Due To It's Gravity To Make Sure The Extinguish Gas Can Enter Into The Cold Aisle Containment.

Working Voltage	Rated Power	Sticking Force
24V DC	2.4W	$F \geq 60\text{KG}@D=0\text{mm}, 12\text{V DC}$

- (1) The Roof panels Are Made From Steel Frame And Tempered Glass, The Thickness Of Steel Frame Is More Than 1.5mm, Thickness Of Glass Is More Than 5mm, Light Pass Rate Is More Than 99%.
- (2) All the panels has width of 600mm, each unit can be installed independently and connected to the next one.
- (3) All The Panels Are Stuck By Electro Magnet, Panels Will Be Opened When There Is A Fire Alarm, Sensor Action Time Is Less Than 3 Seconds, The Panels Occupies At Least 60% Volume Against The Whole Cold Aisle Containment



ROOF PANEL OPENED



Openable Roof Panel

Openable Roof Panel Was Attracted By Electromagnet Under Working Condition, The Panel Is Paralleled To The Walkway For Sealing Purpose. When A Fire Alarm Occurs, The Panel Will Be Opened Shortly To Ensure That The Extinguishing Gas Can Enter The Closed Cold Aisle Containment Before The Fire Fighting System Is Activated.

N°	Item n°	Name	Size	Description
1	AR-OGRP-01	Openable Glass Roof Panel 600mm	600(D)* 1375(W)	Depth: 600mm; Width: 1375mm; Metal Frame And Tempered Glass, 70% Area Is Openable, Light Transmission Rate Is 80% In The Openable Area
2	AR-OGRP-02	Openable Glass Roof Panel 800mm	800(D)* 1375(W)	Depth: 800mm; Width: 1375mm; Metal Frame And Tempered Glass, 60% Area Is Openable, Light Transmission Rate Is 80% In The Openable Area
3	AR-OGRP-03	Openable Glass Roof Panel 600mm, With Light	600(D)* 1375(W)	Depth: 600mm; Width: 1375mm; Metal Frame And Tempered Glass, With Built In Led Light, 70% Area Is Openable, Light Transmission Rate Is 80% In The Openable Area

4	AR-OGRP-04	Openable Glass Roof Panel 800mm, With Light	800(D)* 1375(W)	Depth: 800mm; Width: 1375mm; Metal Frame And Tempered Glass, With Built In Led Light, 60% Area Is Openable, Light Transmission Rate Is 80% In The Openable Area
5	AR-OGRP-05	Openable Pc Roof Panel 600mm	600(D)* 1375(W)	Depth: 600mm; Width: 1375mm; Metal Frame And Tempered Glass, 70% Area Is Openable, Light Transmission Rate Is 80% In The Openable Area
6	AR-OGRP-06	Openable Pc Roof Panel 800mm	800(D)* 1375(W)	Depth: 600mm; Width: 1375mm; Metal Frame And Tempered Glass, 60% Area Is Openable, Light Transmission Rate Is 80% In The Openable Area
7	AR-OGRP-07	Openable Pc Roof Panel 600mm, With Light	600(D)* 1375(W)	Depth: 600mm; Width: 1375mm; Metal Frame And Tempered Glass, With Built In Led Light 70% Area Is Openable, Light Transmission Rate Is 80% In The Openable Area
8	AR-OGRP-08	Openable Pc Roof Panel 800mm, With Light	800(D)* 1375(W)	Depth: 800mm; Width: 1375mm; Metal Frame And Tempered Glass, With Built In Led Light 70% Area Is Openable, Light Transmission Rate Is 80% In The Openable Area



Fixed Roof Panel

Fixed Roof Panel Is Made Of Steel Frame Plus Transparent Window Inside, Unable To Open, Others Same As Openable. Panel For System Integrity Purpose.

N°	Item n°	Name	Size	Description
1	AR-FGRP-01	Fixed Glass Roof Panel 600mm	600(D)* 1375(W)	Depth: 600mm; Width: 1375mm; Fixed At Top, Metal Frame And Tempered Safe Glass
2	AR-FGRP-02	Fixed Glass Roof Panel 800mm Fixed Pc Roof Panel	800(D)* 1375(W)	Depth: 800mm; Width: 1375mm; Fixed At Top, Metal Frame And Tempered Safe Glass
3	AR-FGRP-03	600mm Fixed Pc Roof Panel	600(D)* 1375(W)	Depth: 600mm; Width: 1375mm; Fixed At Top, Metal Frame And Transparent Pc Board
4	AR-FGRP-04	800mm Fixed Glass Roof Panel	800(D)* 1375(W)	Depth: 800mm; Width: 1375mm; Fixed At Top, Metal Frame And Transparent Pc Board
5	AR-FGRP-05	600mm With Light	600(D)* 1375(W)	Depth: 600mm; Width: 1375mm; Fixed At Top, Metal Frame And Tempered Safe Glass, With Built In Led Light

6	AR-FGRP-06	Fixed Glass Roof Panel 800mm With Light	800(D)* 1375(W)	Depth: 800mm; Width: 1375mm; Fixed At Top, Metal Frame And Tempered Safe Glass, With Built In Led Light
7	AR-FGRP-07	Fixed Pc Roof Panel 600mm With Light	600(D)* 1375(W)	Depth: 600mm; Width: 1375mm; Fixed At Top, Metal Frame And Transparent Pc Board, With Built In Led Light
8	AR-FGRP-08	Fixed Pc Roof Panel 800mm With Light	800(D)* 1375(W)	Depth: 800mm; Width: 1375mm; Fixed At Top, Metal Frame And Transparent Pc Board, With Built In Led Light
9	AR-FGRP-09	Fixed Metal Roof Panel 300mm	300(D)* 1375(W)	Depth: 300mm; Width: 1375mm; All Metal Structure Fixed At Top
10	AR-FGRP-10	Fixed Glass Roof Panel 300mm	300(D)* 1375(W)	Depth: 300mm; Width: 1375mm; Top Fixed, Metal Frame And Tempered Safe Glass
11	AR-FGRP-11	Fixed Pc Roof Panel 300mm	300(D)* 1375(W)	Depth: 300mm; Width: 1375mm; Fixed At Top, Metal Frame And Transparent Pc Board





Functional Roof Panel

Functional Roof Panel Is Made Of Steel Sheet, Suit For Installation Of Environmental Control Module And The Control Device Of The Aisle Containment At The Beginning, End Or Middle Of The Roof Panel. Hole Specification Should Be. Provided By Client In Advance.

N°	Item n°	Name	Size	Description
1	AR-FRP-01	Functional Roof Panel 600mm	600(D)* 1375(W)	Metal Structure Fixed At Top, Customized Hole Positions Upon Request.
2	AR-FRP-02	Functional Roof Panel 800mm	800(D)* 1375(W)	Metal Structure Fixed At Top, Customized Hole Positions Upon Request.
3	AR-FRP-03	Functional Roof Panel 600mm With Light	600(D)* 1375(W)	Metal Structure Fixed At Top, Built In Led Light, Customized Hole Positions Upon Request.
4	AR-FRP-04	Functional Roof Panel 800mm With Light	800(D)* 1375(W)	Metal Structure Fixed At Top, Built In Led Light, Customized Hole Positions Upon Request

1800

1200

600



Roof Panel Bracket

Roof panel bracket is installed at the top of cabinet for support purpose. The normal height is 300mm to make sure cabinet door has no conflict while the roof panel is opened. The usage of roof panel bracket and panel is for sealing purpose to isolate the hot and cold air flow.

N°	Item n°	Name	Size	Description
1	AR-RPB-01	Roof Panel Bracket 300mm	300(D)* 300(H)	Height: 300mm; width: 300mm; thickness: 1.2Mm; for 300mm wide cabinets; 1 pair for a 300mm wide roof panel
2	AR-RPB-02	Roof Panel Bracket 600mm	600(D)* 300(H)	Height: 300mm; width: 600mm; thickness: 1.2Mm; for 600mm wide cabinets; 1 pair for a 600mm wide roof panel
3	AR-RPB-03	Roof Panel Bracket 800mm	800(D)* 300(H)	Height: 300mm; width: 800mm; thickness: 1.2Mm; for 800mm wide cabinets; 1 pair for a 800mm wide roof panel

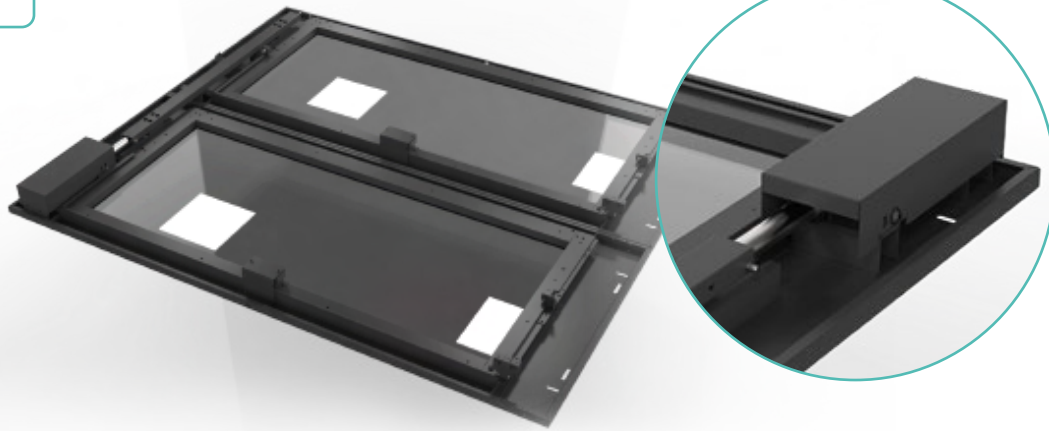
4	AR-RPB-04	Roof Panel Bracket 1200mm	1200(D)* 300(H)	Height: 300mm; width: 1200mm; thickness: 1.2Mm; for 1200mm wide cabinets; 1 pair for a 1200mm wide roof panel
5	AR-RPB-05	Roof Panel Bracket 1800mm	1800(D)* 300(H)	Height: 300mm; width: 1800mm; thickness: 1.2Mm; for 1800mm wide cabinets; 1 pair for a 1800mm wide roof panel
6	AR-RPB-06	Roof Panel Bracket 300mm With Mounting Holes	300(D)* 300(H)	Height: 300mm; width: 300mm; thickness: 1.2Mm; for 600mm wide cabinets; 1 pair for a 600mm wide roof panel; with holes for t5 lighting and atmosphere lamp.
7	AR-RPB-07	Roof Panel Bracket 600mm With Mounting Holes	600(D)* 300(H)	Height: 300mm; width: 600mm; thickness: 1.2Mm; for 600mm wide cabinets; 1 pair for a 600mm wide roof panel; with holes for t5 lighting and atmosphere lamp.
8	AR-RPB-08	Roof Panel Bracket 800mm With Mounting Holes	800(D)* 300(H)	Height: 300mm; width: 800mm; thickness: 1.2Mm; for 800mm wide cabinets; 1 pair for a 800mm wide roof panel; with holes for t5 lighting and atmosphere lamp.
9	AR-RPB-09	Roof Panel Bracket 1200mm With Mounting Holes	1200(D)* 300(H)	Height: 300mm; width: 1200mm; thickness: 1.2Mm; for 2x600mm wide cabinets; 1 pair for 2x600mm wide roof panel; with holes for t5 lighting and atmosphere lamp.
10	AR-RPB-10	Roof Panel Bracket 1800mm With Mounting Holes	1800(D)* 300(H)	Height: 300mm; width: 1800mm; thickness: 1.2Mm; for 3x600mm wide cabinets; 1 pair for 3x600mm wide roof panel; with holes for t5 lighting and atmosphere lamp.



FIRE FIGHTING LINKAGE

COMPONENTS OF Resetting the Roof Panel

CLOSED



OPENED



Perfectly designed one button open and close system, ensure all the roof panels can be opened and closed automatically, with no power consumption and no maintenance needed in daily use, motor voltage DC 12V.

Item n°	Name	Voltage	Description
AR-RRP-01	Components for resetting the roof panel	DC12V	The system includes resetting push rod, connecting rod and status capturing to carry out the linkage of roof panel open and close.

Framework Design

1. Modular designed frame made of cold roll steel, with thickness $\geq 1.2\text{mm}$ to ensure the firmness and security.
2. Each modular unit has proper space for cable management of installation sensor, control unit etc.
3. The framework meets the requirements for laying the air sampling pipe network of the fire protection system.

Containment Door Specification

1. The door has the steel frame with built in 5mm thickness glass, seamlessly connected with cabinets to prevents airflow leakage.
2. Both the front and rear of the containment has the doors, sliding on the rail with nylon silent pulley, to ensure the smooth open and close.

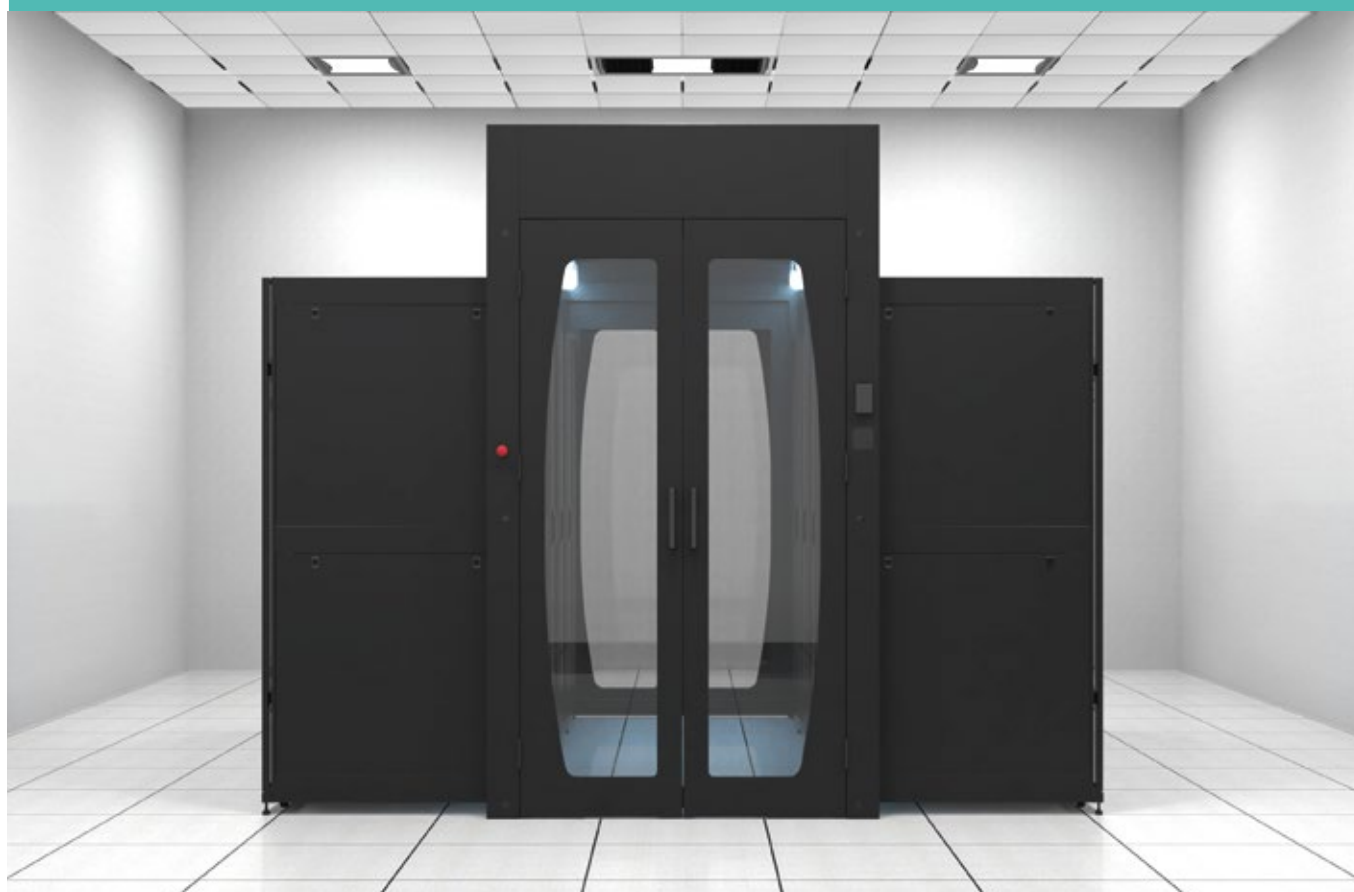
15 YEARS ABSORBED





M.O.V.A.B.L.E DOOR

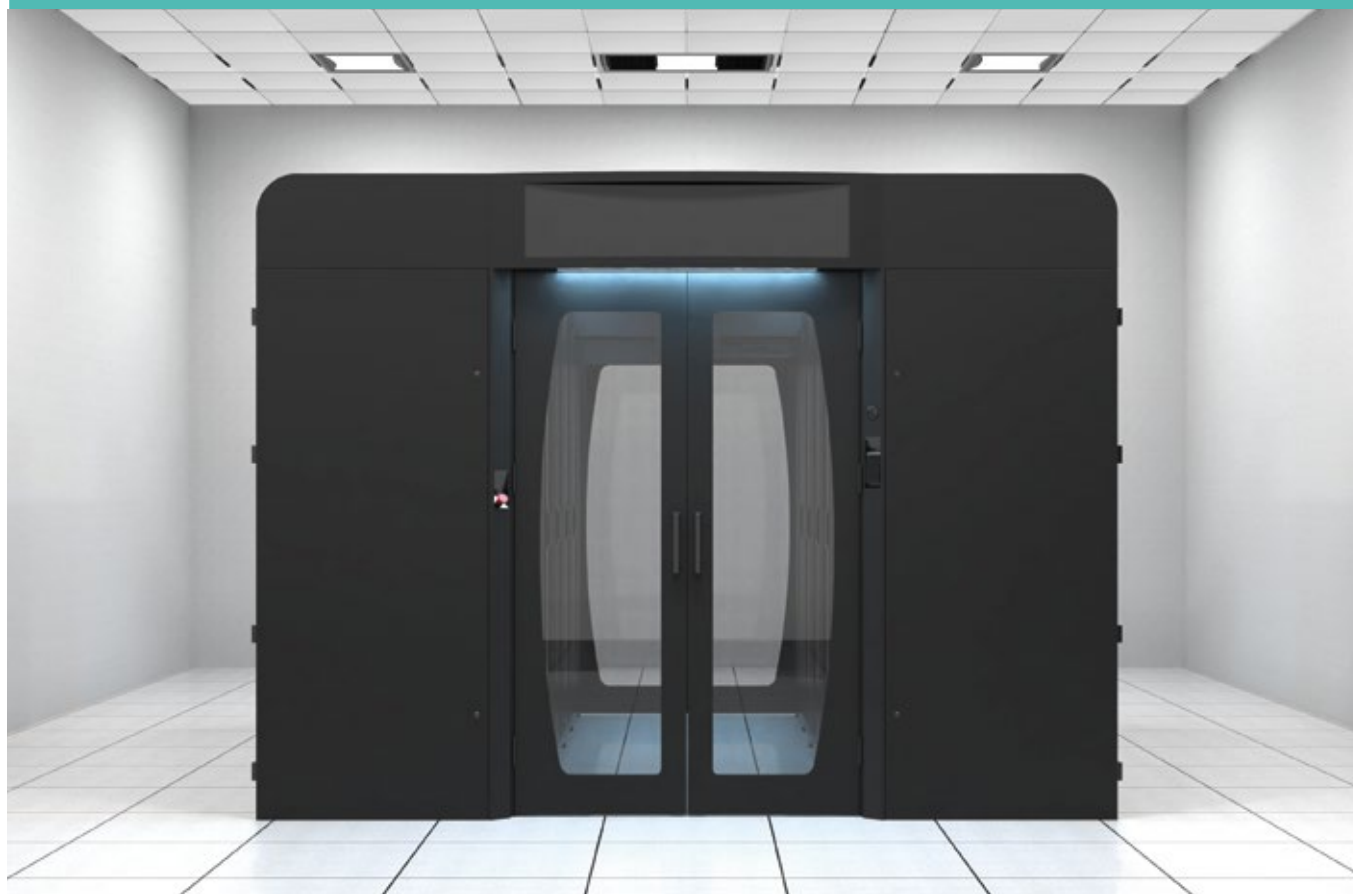
Hinged Door



Split outward doors with two knobs, with buffer automatic closing device, door open angle bigger than 110°. with 5mm thickness transperant monitoring window. Able to install lighting switches, roof panel emergency stop control device, access control card reader, etc.

N°	Item n°	Name	Size	Description
1	AR-HD-01	Hinged door 1200mm*2000mm	1200(W)* 2000(H)	Made Of Metal Frame And Transperant Window, With Function Of Open Angle And Automatic Closing
2	AR-HD-02	Hinged door 1200mm*2200mm	1200(W)* 2200(H)	Made Of Metal Frame And Transperant Window, With Function Of Open Angle And Automatic Closing.
3	AR-HD-03	Hinged door with access control 1200mm*2000mm	1200(W)* 2000(H)	Made Of Metal Frame And Transperant Window, With Function Of Open Angle And Automatic Closing, With Access Control.
4	AR-HD-04	Hinged door with access control 1200mm*2200mm	1200(W)* 2200(H)	Made Of Metal Frame And Transperant Window, With Function Of Open Angle And Automatic losing, With Access Control.

Hinged Door With Led Screen and Cabinets At Two Sides



Split outward doors with two knobs, with buffer automatic closing device, door open angle bigger than 110°. with 5mm thickness transperant monitoring window. Able to install lighting switches, roof panel emergency stop control device, access control card reader, etc.

N°	Item n°	Name	Size	Description
1	AR-HD-L2S-01	Hinged door with LED screen and cabinets at two sides. 1200mm*2000mm	1200(W)* 2000(H)	Made of metal frame and transperant window, with function of open angle and automatic closing, with access control, with decorate frame at two sides and LED screen at top.
2	AR-HD-L2S-02	Hinged door with LED screen and cabinets at two sides. 1200mm*2200mm	1200(W)* 2200(H)	Made of metal frame and transperant window, with function of open angle and automatic closing, with access control, with decorate frame at two sides and LED screen at top.

Aluminium Alloy Frame Sliding Door



With a sliding hanging rail at the top, no rail at the bottom, knob on both sides with 5mm thickness transparent monitoring window.

N°	Item n°	Name	Size	Description
1	AR-AFSD-01	Aluminum alloy frame sliding door 2000mm	1200(W)* 2000(H)	Sliding left and right, made of aluminum alloy frame and tempered glass, fixed by hanging free of ground rail.
2	AR-AFSD-02	Aluminum alloy frame sliding door 2200mm	1200(W)* 2200(H)	Sliding left and right, made of aluminum alloy frame and tempered glass, fixed by hanging free of ground rail.

Metal Frame Sliding Door



With a sliding hanging rail at the top, no rail at the bottom, knob on both sides with 5mm thickness transparent monitoring window

N°	Item n°	Name	Size	Description
1	AR-MFSD-01	Metal frame sliding door 2000mm	1200(W)* 2000(H)	Sliding left and right, made of metal frame and tempered glass, fixed by hanging free of ground rail.
2	AR-MFSD-02	Metal frame sliding door 2200mm	1200(W)* 2200(H)	Sliding left and right, made of metal frame and tempered glass, fixed by hanging free of ground rail.

Frameless Sliding Door With Cabinets On Both Sides



With a sliding hanging rail at the top, no rail at the bottom, knob on both sides with 5mm thickness transparent monitoring window.

N°	Item n°	Name	Size	Description
1	AR-FSD-CB-01	Frameless sliding door with cabinets on both sides 2000	1200(W)* 2000(H)	Sliding left and right, frameless glass sliding door, with decorative cabinets on both sides, fixed by hanging free of ground rail.
2	AR-FSD-CB-02	Frameless sliding door with cabinets on both sides 2200	1200(W)* 2200(H)	Sliding left and right, frameless glass sliding door, with decorative cabinets on both sides, fixed by hanging free of ground rail.

Automatic Sliding Door



Frameless automatic sliding door With high-strength sliding hanging rail at the top. With 5mm thickness transparent monitoring window. Access by card or password

N°	Item n°	Name	Size	Description
1	AR-ASD-01	Automatic sliding door 2000mm	1200(W)* 2000(H)	Sliding automatically, made of aluminum alloy frame and tempered glass, access control by sensor, fixed by hanging free of ground rail.
2	AR-ASD-02	Automatic sliding door 2200mm	1200(W)* 2200(H)	Sliding automatically, made of aluminum alloy frame and tempered glass, access control by sensor, fixed by hanging free of ground rail.

Automatic Sliding Door With False Cabinet On Both Sides



Automatic sliding door with false cabinet on both sides With high-strength sliding hanging rail at the top. With 12mm thickness transparent monitoring window. Access by card or password.

N°	Item n°	Name	Size	Description
1	AR-ASD-FCB-01	Automatic sliding door with false cabinet on both sides 2000mm	1200(W)* 2000(H)	Sliding automatically, made of tempered glass with decorative cabinet on both sides, access control, fixed by hanging free of ground rail
2	AR-ASD-FCB-02	Automatic sliding door with false cabinet on both sides 2200mm	1200(W)* 2200(H)	Sliding automatically, made of tempered glass with decorative cabinet on both sides, access control, fixed by hanging free of ground rail

CONTROL UNIT

Fire Fighting Control Unit

1. One set for each cold aisle, preset terminal linked with firefighting signal, open the roof panel automatically to eliminate the potential danger in the aisle.
2. The fire control linkage unit has a small circuit breaker to protect the equipment from overcurrent and short circuit, with indicator shows blue light as normal for maintenance.
3. 2U size for standard 19" cabinet, installation can be inside the cabinet or at the top.

Ambient Light Control Unit

1. Each aisle with a set, connecting with the atmosphere light of the aisle to manage the color change.
2. With switch for blue and green color change function.
3. When the roof panel opened, smoke alarm, temperature and humidity alarm etc. occurs, the atmosphere light turns red.
4. Ambient light control unit with a small circuit breaker to protect the device from overcurrent and short circuit.
5. Input voltage AC 220V/110V, output voltage DC 24V/12V.

N°	Item n°	Name	Size	Description
1	AR-FFCU-01	Fire fighting control unit.	2U, 19 inch installation	Voltage input 220V, one for each containment, 24V power switch, simultaneously operation is optional, 2m long power cord with plug
2	AR-RPRC-01	Roof panel reset control unit	2U, 19 inch installation	Receiving control information, provide reset drive power, simultaneously operation is optional.
3	AR-CADEIA-01	Cold aisle dynamic environment intelligent acquisition unit	1U, 19 inch installation	Dynamic environment monitoring, collecting and controlling cold aisle temperature, humidity, roof panel system etc. Operated by touch screen

4	AR-LDCU-01	LED display control unit	2U, 19 inch installation	Receive control information from display screen, with four detective status exchange, accept modification content by internet, flash disk. Red and blue signal lights exchange simultaneously with the detection status of display screen
5	AR-ALCU-01	Ambient light control unit	2U, 19 inch installation	One set for each aisle, 12V power supply switch, control ambient light, simultaneously with roof panel open state, 2m long power cord with plug
6	AR-LCU-01	Lighting control unit		With dual control switch for opening and closing, two sets for one aisle.



LIGHTING

SYSTEM



LED LIGHTING

T5 white light adopts LED cold light source, exposed installation, illumination is more than 600 lumens.



N°	Item n°	Name	Description
1	AR-4W-30PCS-321MM	T5 white light 300mm	T5 white light; voltage 220V; length: 321mm; power 4W, up to 30pcs in series.
2	AR-8W-15PCS-583MM	T5 white light 600mm	T5 white light; voltage 220V; length: 583mm; power 8W, up to 15pcs in series.
3	AR-10W-10PCS-883MM	T5 white light 900mm	T5 white light; voltage 220V; length: 883mm; power 10W, up to 10pcs in series
4	AR-12W-9PCS-1050MM	T5 White light 1000mm	T5 white light; voltage 220V; length: 1050mm; power 12W, up to 9pcs in series
5	AR-16W-8PCS-1180MM	T5 white light 1200mm	T5 white light; voltage 220V; length: 1180mm; power 16W, up to 8pcs in series

LED THREE PRIMARY ATMOSPHERE LAMP

The LED three primary color atmosphere lights provides blue, green and red colors, reflects the internal temperature environment status through different color of lights



N°	Item n°	Name	Description
1	AR-LPAL-600MM	LED three primary color atmosphere light 600mm	Voltage DC12V; length: 600mm
2	AR-LPAL-1200MM	LED three primary color atmosphere light 1200mm	Voltage DC12V; length: 1200mm
3	AR-LPAL-1800MM	LED three primary color atmosphere light 1800mm	Voltage DC12V; length: 1800mm
4	AR-LPAL-2400MM	LED three primary color atmosphere light 2400mm	Voltage DC12V; length: 2400mm
5	AR-LPAL-3000MM	LED three primary color atmosphere light 3000mm	Voltage DC12V; length: 3000mm

DECORATIVE WALL

N°	Item n°	Type	Name	Size	Description
1	AR-MDW-600x2000	AR-LPAL-600MM	All metal decorative wall 600x2000	600(W)*2000(H)	All-metal folding structure, to fill the empty space while baying the cabinets.
2	AR-MDW-600x2200	AR-LPAL-1200MM	All metal decorative wall 600x2200	600(W)*2200(H)	All-metal folding structure, to fill the empty space while baying the cabinets.
3	AR-BADW-600x2000	AR-LPAL-1800MM	Built-in acrylic decorative wall 600x2000	600(W)*2000(H)	Metal frame with acrylic board, to fill the empty space while baying the cabinets.
4	AR-BADW-600x2200	AR-LPAL-2400MM	Built-in acrylic decorative wall 600x2200	600(W)*2200(H)	Metal frame with acrylic board, to fill the empty space while baying the cabinets.
5	AR-SDDW-XX	Sealing decorative board	Sealing decorative board	Custom made	Customized parts, all-metal folding structure, used for sealing the pillars in the channel.

Function

When the pillar among the cabinets, sealing decorative board should be installed aligning the cabinet door. When the pillar in the aisle, install a decorative wall between the pillar and the cabinet. Airflow isolation is for better hot and cold wind management, make the whole system beautiful and integrative.



SEALING DECORATIVE BOARD



SEALING DECORATIVE BOARD WITH PILLAR COVER

ENVIRONMENT MONITORING

7 Inch Touching Screen - AR-EM-7INCH

Display the temperature, humidity and air pressure status, display the status of the roof panel, control reset of the roof panel automatically, with the application of cold asile dynamic environment intelligent acquisition unit. Resistive screen, need to be used with 19-inch dynamic ring monitoring host. And with Sealed decorative hoarding with wrapped column.



10 Inch Touching Screen - AR-EM-A7-10"

Applying 10 inch touch screen, Cortex A7 CPU, Android operating system 1x RS232, 5x RS485 serial ports, has 5x DI(digit input) and 2x DO(digit output), Applying Cortex A7 CPU, Android operating system Able to connect sensors such as water leakage, lightning protection, infrared ray, smoking, etc.





SMOKE SENSOR AR-SS-85DB

DC12V network connected, dry contact switch output.

Input voltage: DC12V;

Detection range: 20m²;

Size: \varnothing 100*55mm

Sound volume: 85 dB;

Working temperature: -10°C~50°C

Switch output: open/ close



TEMPERATURE SENSOR AR-TS-70C

12-24V network connected, alarm temperature 50-70 degrees, dry contact switch output

Input voltage: DC12V/24V;

Size: \varnothing 107*50mm;

Working temperature: 50°C ~70°C ;

Switch output: open / close;

Installation height: less than 4 meters



DISPLAY MODULE FOR COLLECTED TEMPERATURE AND HUMIDITY AR-DM-TH

Built-in probe, set the upper and lower limits according to different temperature and humidity, control the backlash, and set the control mode separately.

Input voltage: DC12V/24V;

Size: 86*86*26mm

Temperature range: -40°C ~+60°C ;

Temperature accuracy: \pm 0.5°C (25°C environment);

Temperature resolution: 0.1°C;

Humidity range: 0%RH~80%RH;

Humidity accuracy: \pm 3%RH (25°C environment);

Communication port: RS485 port;

HOT AISLE

CONTAINMENT

Hot aisle containment is made from light duty aluminum profile and thermal insulation PC board, has better heat dissipation performance than cold aisle containment in high density data centers, to strength the heat dissipation and save more energy. Thanks to it's modular structure makes it widely accepted in high density data centers



NORMAL Hot Aisle Containment

The cabinets will be lined up back to back, make a sealed space from the top of cabinet rear door to ceiling as a hot aisle containment, enable the hot wind back to the CRAC via ceiling.

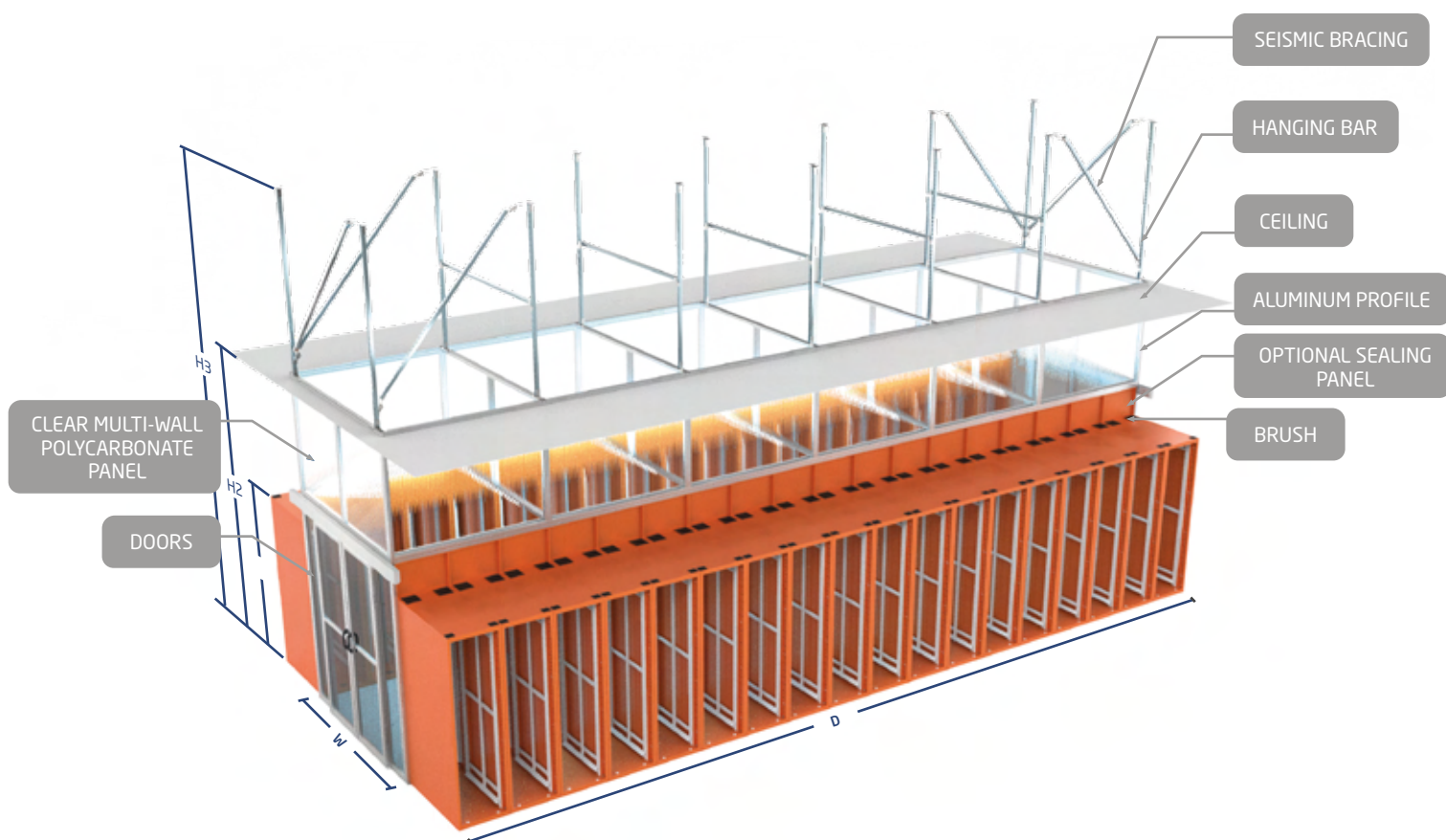


PREFABRICATED Hot Aisle Containment

The support structure is used of several pieces of pre-combined modular aluminum profiles, which enables no welding is needed on site.

In overhead applications the solution is completely supported by the ceiling so it is rack independent and server cabinets can be moved in and out without effecting the containment. The preserved space on the top of containment frame is available for camera, lighting, smoke sensor, pressure sensor and temperature sensor etc.





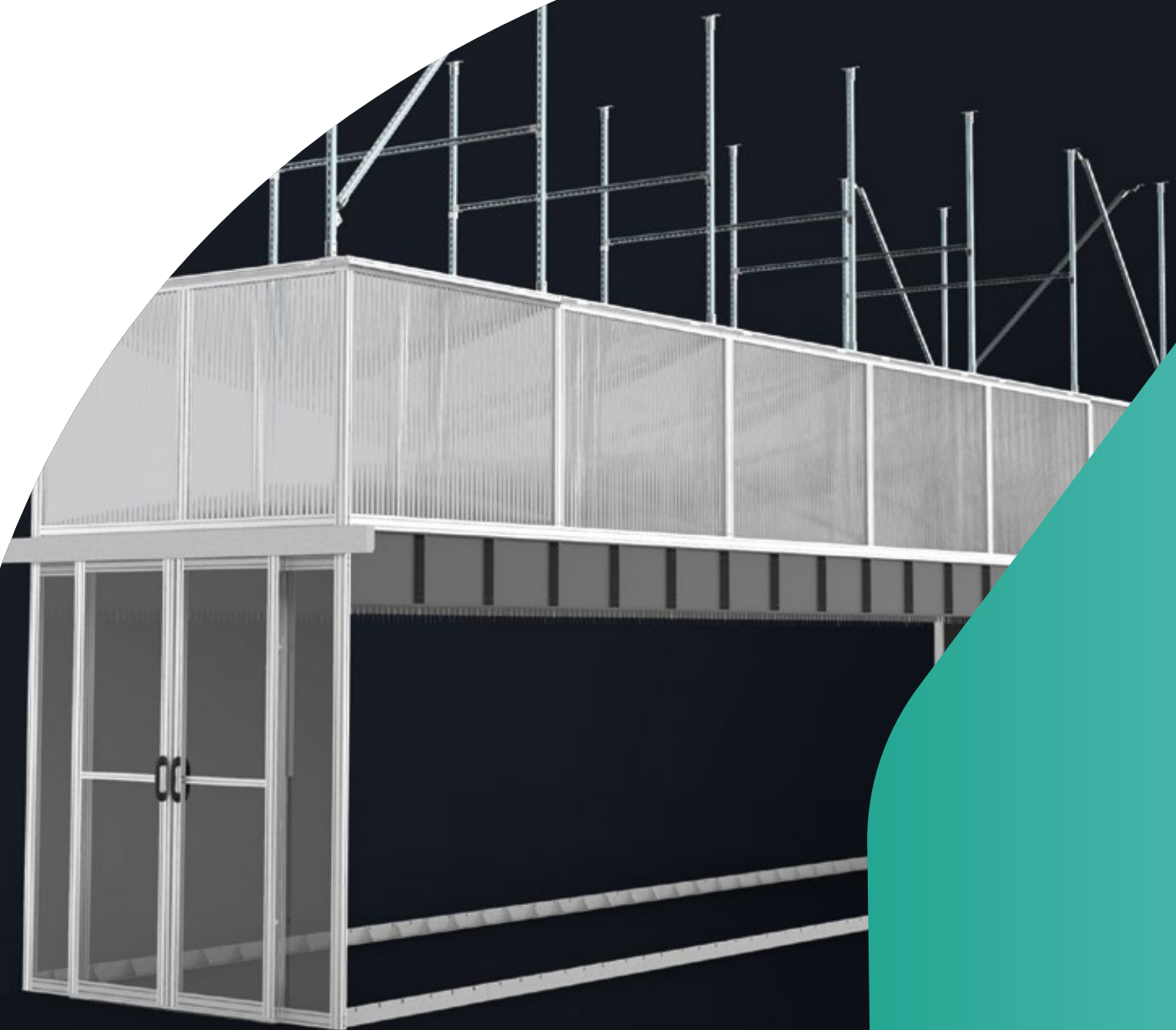
SPECIFICATION NEEDED FOR ORDERING HOT AISLE CONTAINMENT

1. H3 - For Room Height
2. H2 - For Ceiling Height
3. W - For Width Of Containment
4. Width Of Rack
5. D - For Rack Quantity Of Single Line
6. Type Of Containment (Normal, Prefabricated Ceiling Suspended Or Floor Standing)
7. Type Of Door (Sliding Door, Hinged Door).
8. Connector Size To The Cabinet.
9. Need Copper Grounding Bar Or Not?
10. Need Lighting Or Not?

PREFABRICATED

CEILING SUSPENSION HOT AISLE CONTAINMENT

Includes hanging bar, seismic bracing, aluminum profile, doors, optional sealing panel, brush and sealing accessories. Hanging bar is spliced by C or U channel, connecting to room top with adjustable connector plate. With 3 sets of seismic bracing at both end of the containment, ensure the solution's entire strength in horizontal and vertical direction. Material of aluminum profile : 6063-T5, anodizing in silver color
The clear multi-wall polycarbonate panel is hollow and fire proof, heat transfer coefficient $< 4.5W/(M^2 \times K)$, partition designed double sliding door to reinforce the strength and stability, built-in magnet for better sealing performance after closing





Floor Standing Hot Aisle Containment

Pre-spliced aluminum profiles as modular unit, quick and fast installation on site without welding.

Material of aluminum profile : 6063-T5, anodizing in silver color. The clear multi-wall polycarbonate panel is hollow and fire proof, heat transfer coefficient $< 4.5W/(M^2 \times K)$.
Optional doors: double sliding doors, double hinged doors, available of door closer, door access control.

1800MM Sliding Door

Installed when the containment width is less than 1800mm, with two active doors.





2400MM Sliding Door

Installed when the containment
width is 2400mm,
with two active doors

contacto@articlatam.com
www.articlatam.com

LIGHTING

SYSTEM

Apply with LED energy saving light, equally located on the aisle structure to ensure the luminate is more than 500LX

